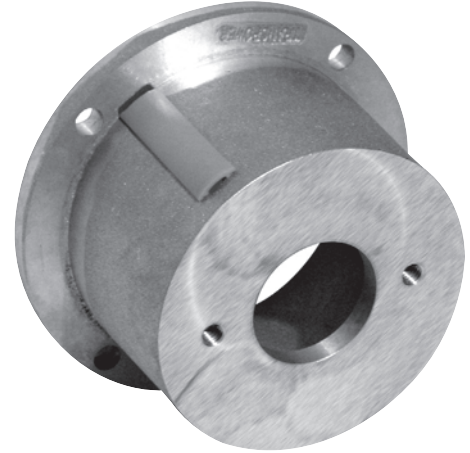


Features

- Made of strong, lightweight cast aluminum
- Encloses shaft and coupling for quieter, safer operation
- Accurately machined to insure proper alignment
- Access opening with safety orange cover included
- Combines electric motor/pump into one unit for quick, easy installation
- Metric sizes, 45° rotated flanges and special sizes also available
- Working temperature 22°F to 176°F

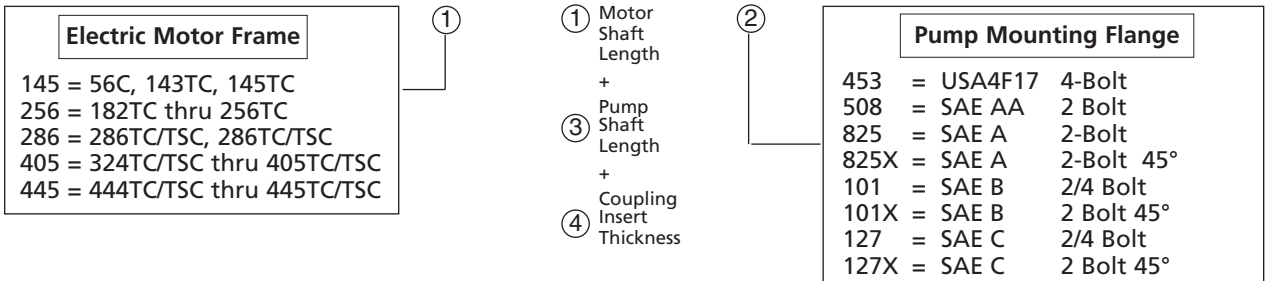


Selection Information

- ① Nema C-Face Electric Motor Frame Size Group
- ② Pump Mounting Flange of Pump
- ③ Shaft Length of Pump
- ④ Thickness of Coupling Insert

Model Number Breakdown

145 - 425 - 825



Face to Face Dimension

145 Size	256 Size	286 Size	405 Size	445 Size
350 = 3½"	438 = 4¾"	588 = 5⅝"	638 = 6⅜"	888 = 8⅝"
381 = 3⅓ ¹³ / ₁₆ "	463 = 4⅝"	675 = 6⅜"	768 = 7⅓ ¹³ / ₁₆ "	975 = 9¾"
425 = 4¼"	500 = 5"	725 = 7¼"	888 = 8⅝"	
	525 = 5¼"	788 = 7⅞"	963 = 9⅝"	
	550 = 5½"	888 = 8⅝"	988 = 9⅝"	
	581 = 5⅓ ¹³ / ₁₆ "		106 = 10⅝"	
	631 = 6⅜"			
	681 = 6⅓ ¹³ / ₁₆ "			

Specifications subject to change without notice