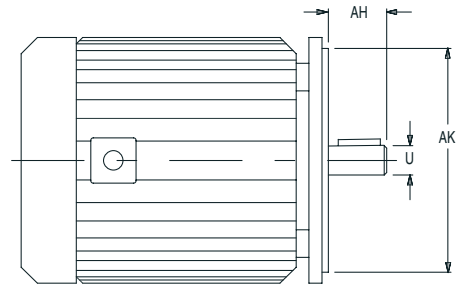


## T-Frame Data

Motor Size	Shaft Information			Register AK	Horsepower 1750 RPM
	AH	U	Key		
56C	2.06	.625	.187	4.50	¼-½
143TC 145TC	2.12	.875	.187	4.50	1-2
182TC 184TC	2.62	1.125	.250	8.50	3-5
213TC 215TC	3.12	1.375	.312	8.50	7.5-10
254TC 256TC	3.75	.625	.375	8.50	15-20
284TC 286TC	4.38	1.875	.500	10.50	25-30
284TSC 286TSC	3.00	1.625	.375	10.50	25-30
324TC 326TC	5.00	2.125	.500	12.50	40-50
324TSC 326TSC	3.50	1.875	.500	12.50	40-50
364TC 365TC	5.62	2.375	.625	12.50	60-75
364TSC 365TSC	3.50	1.875	.500	12.50	60-75
404TC 405TC	7.00	2.875	.750	12.50	100-125
404TSC 405TSC	4.00	2.125	.500	12.50	100-125
444TC 445TC	8.25	3.375	.875	16.00	150-200
444TSC 445TSC	4.50	2.375	.625	16.00	150-200

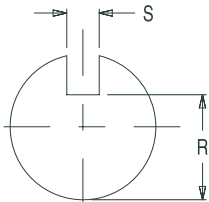


## U-Frame Data

Motor Size	Shaft Information			Register AK	Horsepower 1750 RPM
	AH	U	Key		
182UC 184TC	2.12	.875	.187	4.50	1-2
213UC 215UC	2.75	1.125	.250	8.50	3-5
254UC 256UC	3.50	1.375	.312	8.50	7.5-10
284UC 286UC	4.63	1.625	.375	10.50	15
324UC 326UC	5.38	1.875	.500	12.50	25-30
324USC 326USC	3.00	1.625	.375	12.50	25-30
364UC 365UC	6.12	2.125	.500	12.50	40-50
364USC 365USC	3.50	1.875	.500	12.50	40-50
404UC 405UC	6.88	2.375	.625	12.50	60-75
404USC 405USC	4.00	2.125	.500	12.50	60-75
444UC 449UC	8.38	2.875	.750	16.00	*125-150
444USC 449USC	4.00	2.125	.500	16.00	*125-150

\*Horsepower @ 3450 RPM

## Keyseat Dimensions



Shaft Diameter	Keyseat Dimensions	
	R	S
5/8"	33/64"	3/16"
7/8"	49/64"	3/16"
1 1/8"	63/64"	1/4"
1 3/8"	1 13/16"	5/16"
1 5/8"	1 13/16"	3/8"
1 7/8"	1 19/32"	1/2"
2 1/8"	1 27/32"	1/2"
2 3/8"	2 1/64"	5/8"
2 1/2"	2 3/16"	5/8"
3 3/8"	2 7/8"	7/8"
3 7/8"	2 29/64"	3/4"